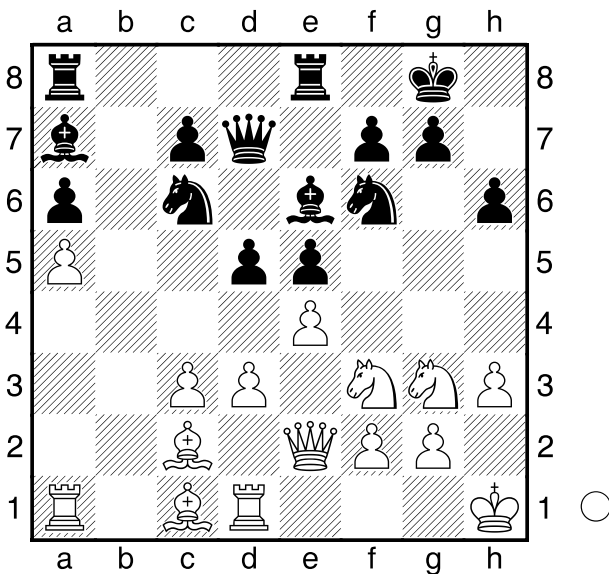


Khalafova,Ilgar C77
 Turkova,Karolina 2092
 EYCC2010 Batumi 1917
26.09.2010

1.e4 e5 2.Nf3 Nc6 3.Bb5 a6 4.Ba4 Nf6
5.Qe2 b5 6.Bb3 Bc5 7.c3 d6 8.0-0 0-0
9.Rd1 Bb6 10.d3 Na5 11.Bc2 h6 12.h3
Nc6 13.a4 b4 14.Nbd2 Re8 15.Nf1 bxc3
16.bxc3 d5 17.Ng3 Be6 18.Kh1 Qd7?
 [18...Ba5+]
19.a5! Ba7? Diagram



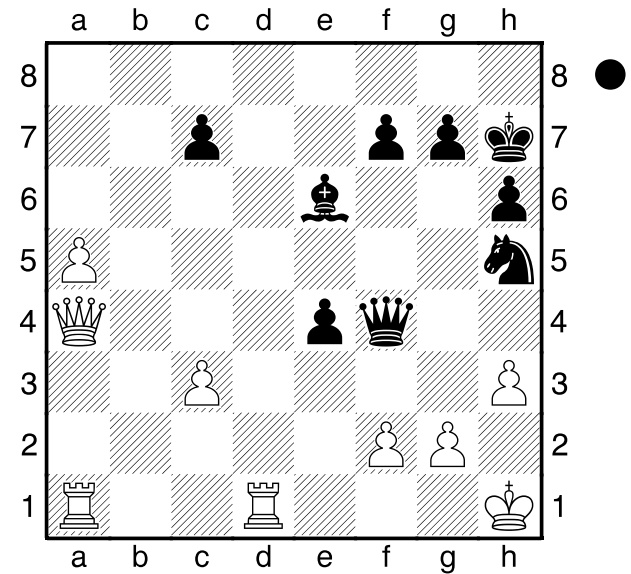
20.Ba4 Qd6 21.Ba3+- Bc5 22.Bxc5 Qxc5
23.d4 Qd6 24.dxe5 Nxe5 25.Bxe8 Rxe8
26.Nxe5 Qxe5 27.Qxa6 dxe4 Kvalita menej,
 volny a pesiak a horsi cas, to nie je najlepsia
 bilancia. **28.Qc6?**

[28.Qe2]
28...Qf4?
 [28...e3 29.f4 (29.Qf3 exf2 30.Qxf2 Qxc3
 so stale horsou poziciou ale sancami na
 zachranu) 29...Qxf4 30.Nh5 Nxe5
 31.Qxe8+ Kh7 minimalne s remizou]
29.Nh5!+- Nxe5 30.Qxe8+ Kh7 31.Qa4?

Diagram
 [31.Qb5]

(Diagram)

31...Bxh3!! 32.Rd3! 32.gxh3? vedie k matu
Bf5!
 [32...exd3? 33.Qxf4 Bxg2+ 34.Kxg2
 Nxf4+-]
33.Re3 Qxf2 34.Qd1! Superka vcas
 pribrzduje utok vratanim jednej kvality **Qxe3**



35.Qxh5 Bg6 36.Qd1 Qg3 37.Qe1 Qg5
38.Qe2 e3 39.Qf3 Bh5 40.Qe4+ Bg6
41.Qf3 Bh5 42.Qe4+ Bg6
 $\frac{1}{2}-\frac{1}{2}$